



MONTHLY MEMBERSHIP PROGRESS REPORT

District 3234D2

Results as of: 06/30/2018

GMT: JAYESH THAKKAR

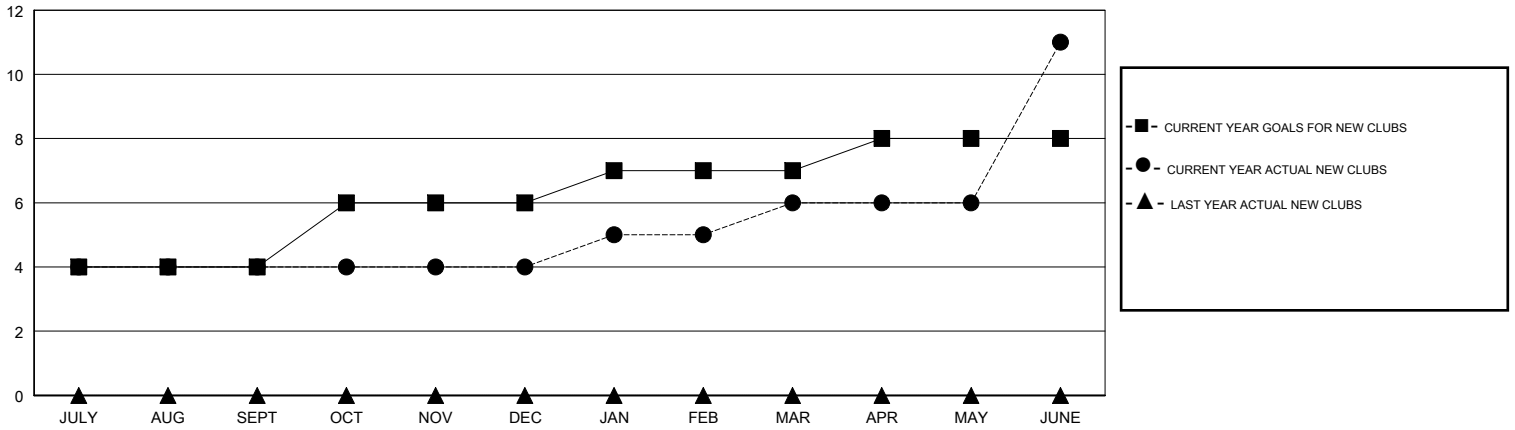
LOCATION INDIA

GMT CA

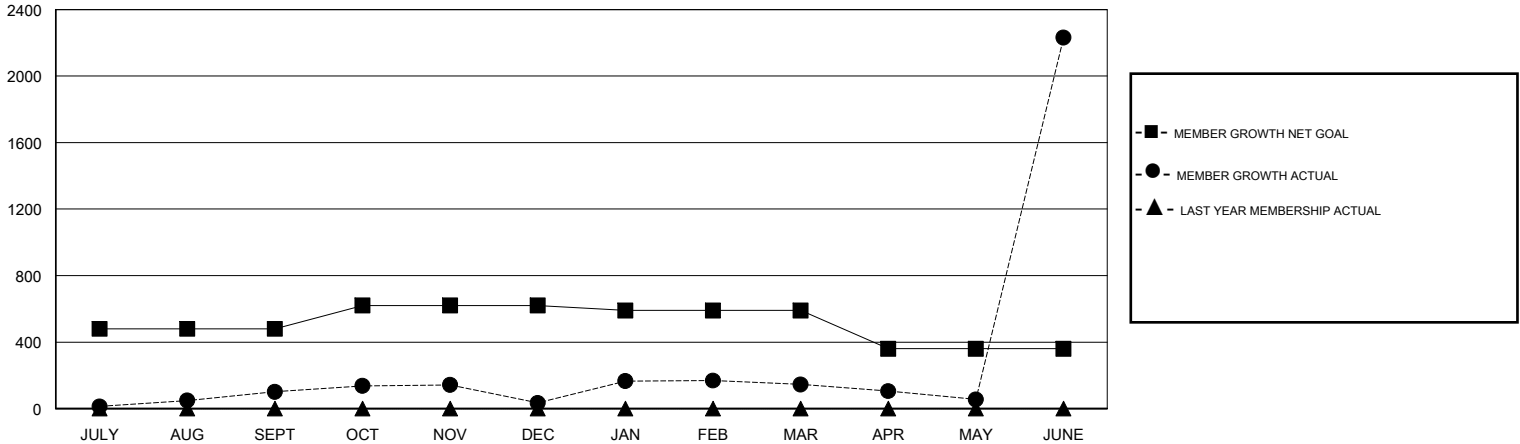
Clubs			
RESULTS FOR 2017-2018			
QUARTER	NEW CLUB GOAL	NEW CLUBS	DROPPED CLUBS
JULY/AUG/SEPT	4	4	1
OCT/NOV/DEC	2	0	6
JAN/FEB/MAR	1	2	1
APR/MAY/JUNE	1	5	7

Members			
RESULTS FOR 2017-2018			
QUARTER	MEMBER GROWTH NET GOAL	MEMBER GROWTH ACTUAL	DROPPED MEMBERS ACTUAL (including transfers)
JULY/AUG/SEPT	480	331	207
OCT/NOV/DEC	140	181	243
JAN/FEB/MAR	-30	271	109
APR/MAY/JUNE	-230	2,855	726

GOALS AND ACTUAL NEW CLUBS CUMULATIVE



GOALS AND ACTUAL MEMBERS CUMULATIVE



DROPPED CLUBS: 14

99 CLUBS OF 142 ADDED 1 OR MORE NEW MEMBERS

GENDER DISTRIBUTION

MALE 4,452 (57.07%)
 FEMALE 3,349 (42.93%)
 Women Percentage Fiscal Year Goal: 40%

DROPPED MEMBERS

DECEASED	5
CLUB CANCELLED	282
OTHER	998
TOTAL	1,285

[CLICK HERE FOR CUMULATIVE MEMBERSHIP DATA](#)

TOTAL FAMILY UNIT MEMBERS	0
FAMILY MEMBERS PAYING HALF DUES	0